

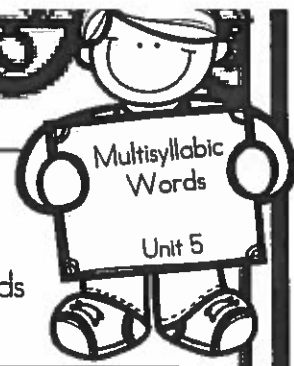
2nd Grade
Week 2

DAY

5

Name: _____

Date: _____



Mark'em Up!

Directions: Read the words in the box below. Scoop or underline the words into syllables and mark the syllable type.

habit	robin	publish	concrete
dislike	flagpole	athlete	lifelong
fireman	submit	invent	backstop
inflate	excuse	contact	upset

Directions: Read the sentences and mark them up.

*Scoop or underline multisyllabic words into syllables and mark the syllable type.

1. Mr. and Mrs. Brant had a picnic.
2. I expect to see you at the lake.
3. Can you fill the plastic jug with milk?
4. Mike saw a chipmunk run away.
5. Can you get me a napkin?

Name: _____

Date: _____

Fill in the Missing Word

Directions: Read the sentence and choose the word that best completes the sentence. Circle the word and then write it on the line.

1. The kitten was _____ than the puppy.

smaller
smallest

2. The bunny was the _____ animal in the pet shop.

softer
softest

3. It was the _____ winter we have had in ten years.

colder
coldest

4. The boy ran the _____ in our class.

faster
fastest

5. The man was _____ than the boy.

stronger
strongest

6. The music at the party was the _____ I have ever heard.

louder
loudest

7. Tom was three inches _____ than Mike.

taller
tallest

8. The snake was _____ than the lizard.

longer
longest



Tarantulas

ABDOMEN

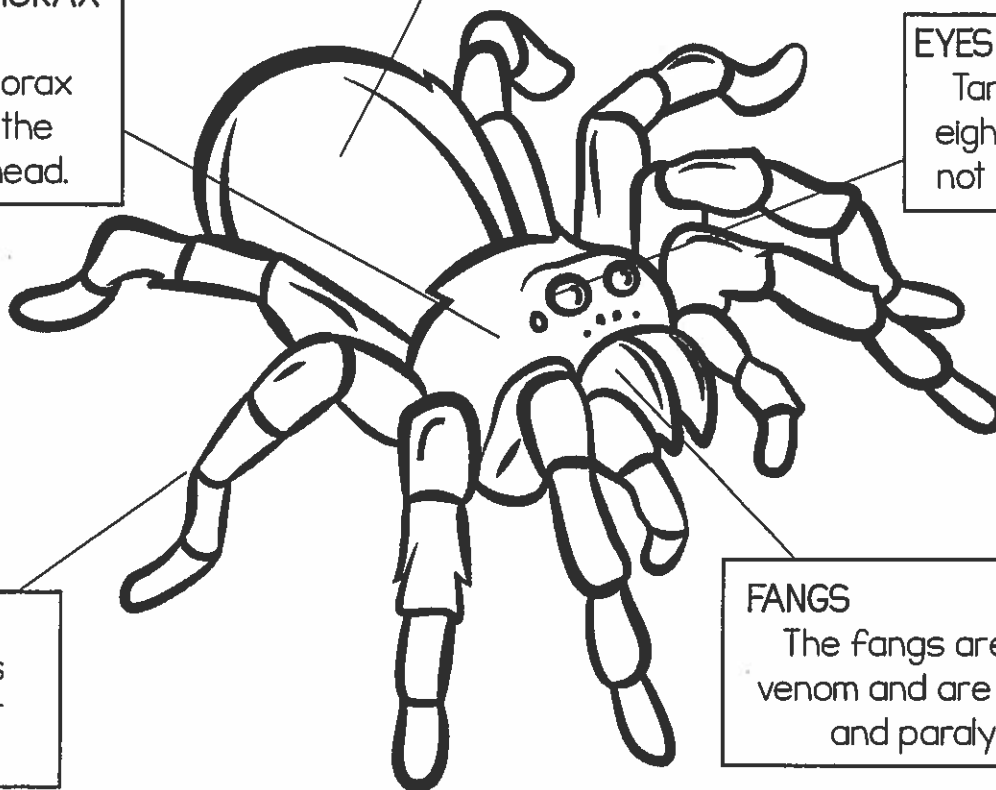
The abdomen is the back part of the spider.

CEPHALOTHORAX

The cephalothorax includes the spider's head.

EYES

Tarantulas have eight eyes, but do not see very well.



LEGS

Tarantulas have eight legs.

FANGS

The fangs are filled with venom and are used to trap and paralyze prey.

1. Which of these best describes the tarantula's abdomen?
- a. filled with venom
 - b. the back part of the spider
 - c. the head

2. The tarantula's head is part of the _____.
- a. legs
 - b. abdomen
 - c. cephalothorax

3. Where are the fangs located?
- a. behind the head
 - b. on the abdomen
 - c. below the eyes

4. A tarantula has poor vision. True or false?
- a. True
 - b. False

Name _____

Comparing

Use <, >, or =.

$79 \bigcirc 28 + 40$

$27 \bigcirc 59 - 30$

$48 \bigcirc 68 - 20$

Missing Addends

Write the missing number.

$9 + \square = 17$

$5 + \square = 13$



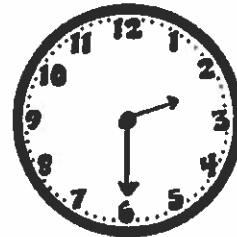
Math Facts

+ 9	
5	
8	
9	
7	

- 4	
13	
11	
14	
12	

Time

What time is shown on the clock?



Money

Wyatt has 4 quarters, 2 dimes, and 3 pennies in his pocket. How much money is in Wyatt's pocket?

_____ is in Wyatt's pocket



Subtraction



$$\begin{array}{r} 844 \\ - 362 \\ \hline \end{array}$$

$$\begin{array}{r} 632 \\ - 275 \\ \hline \end{array}$$

NAME _____

⑫ What is the expanded form of eight hundred sixty two?

A. $8 + 6 + 2$

B. $80 + 60 + 2$

C. $800 + 60 + 20$

D. $800 + 60 + 2$

⑬ Which number sentence is true?

A. $147 < 268$

B. $413 = 418$

C. $876 = 858$

D. $321 > 891$

⑭ Which two number sentences are true?

A. $588 < 432$

D. $551 > 510$

B. $137 > 539$

E. $882 > 899$

C. $123 < 231$

F. $625 < 586$

18) What is $18 + 47$?

A. 101

B. 65

C. 56

D. 55

19) Solve:



+



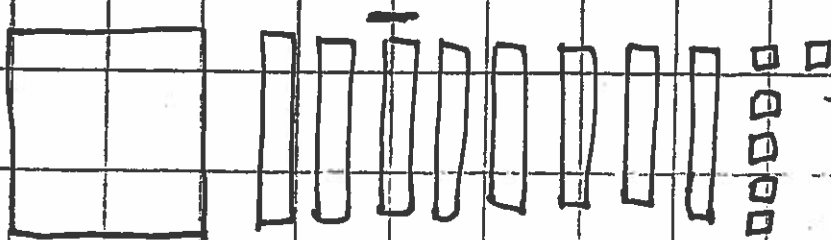
A. 334

B. 327

C. 324

D. 300

20) Evaluate:



A. 236

B. 136

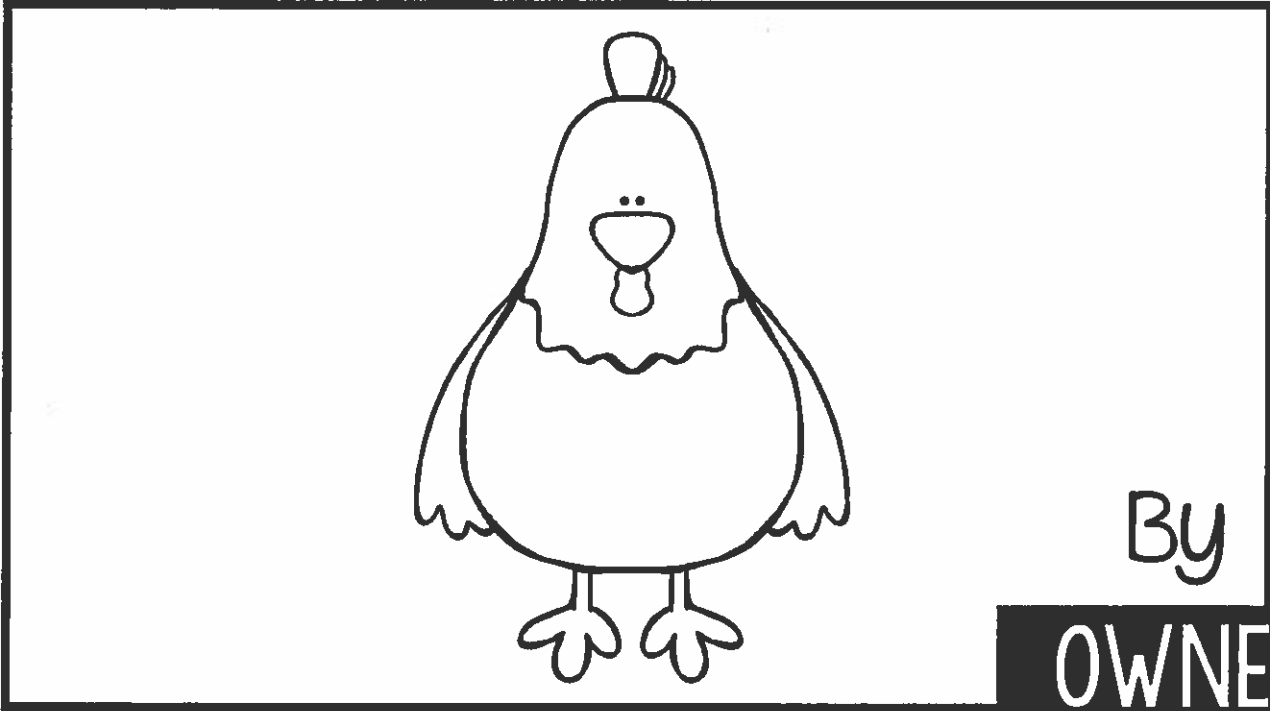
C. 63

D. 263

Name _____

Write a story describing the events that led a farmer to sell this chicken.
Describe the events in sequence and use details to describe actions,
thoughts, and feelings.

For Sale!



Four sets of primary writing lines, each consisting of a solid top line, a dashed middle line, and a solid bottom line.

Name _____

Handwriting practice lines consisting of 15 rows. Each row is defined by a solid top line, a dashed middle line, and a solid bottom line.